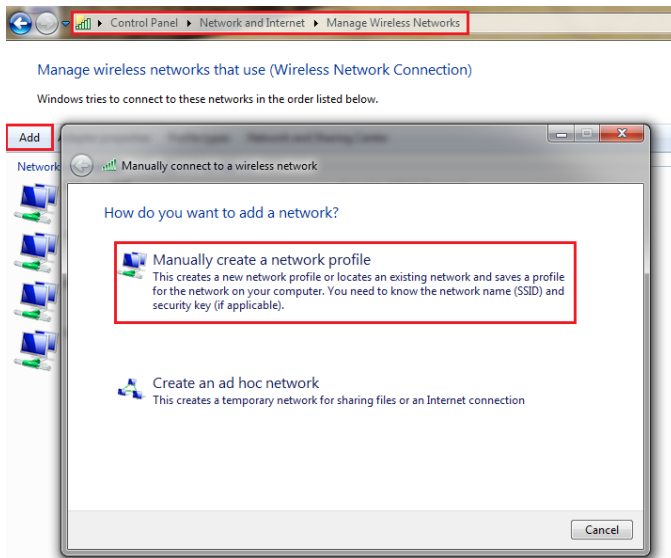


---

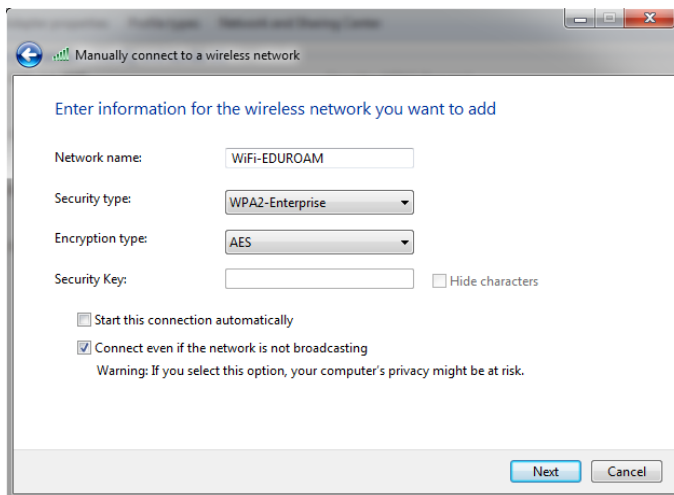
## Connect to Eduroam – Laptop Desktop

---

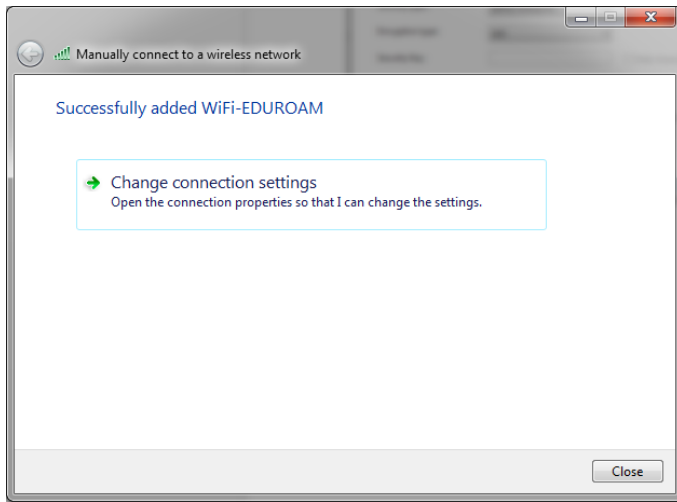
Control Panel -> Network and Internet -> Manage Wireless Networks -> Manually create a network profile:



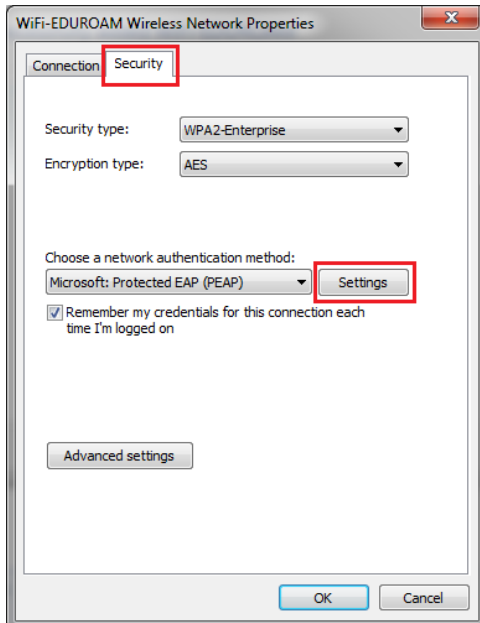
Fill in the settings below:



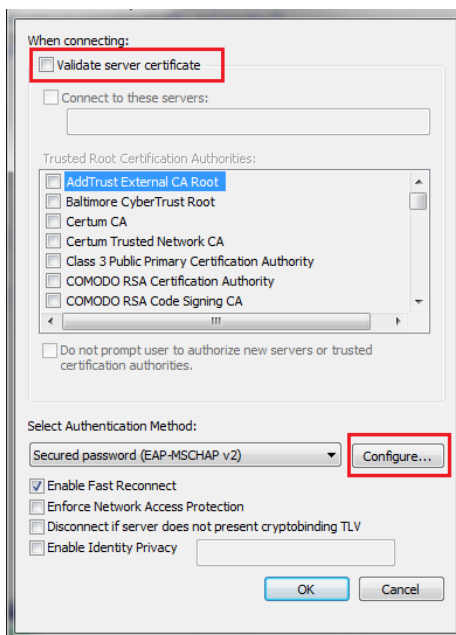
Change connection settings:



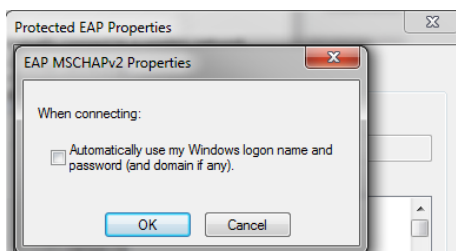
Go to security and select the settings box:



Uncheck the validate server certificate and also click the configure box:



Uncheck the automatically use my Windows logon name and password.



Connect to WiFi-EDUROAM:



Fill in the credentials and you are connected to WiFi-EDUROAM:

