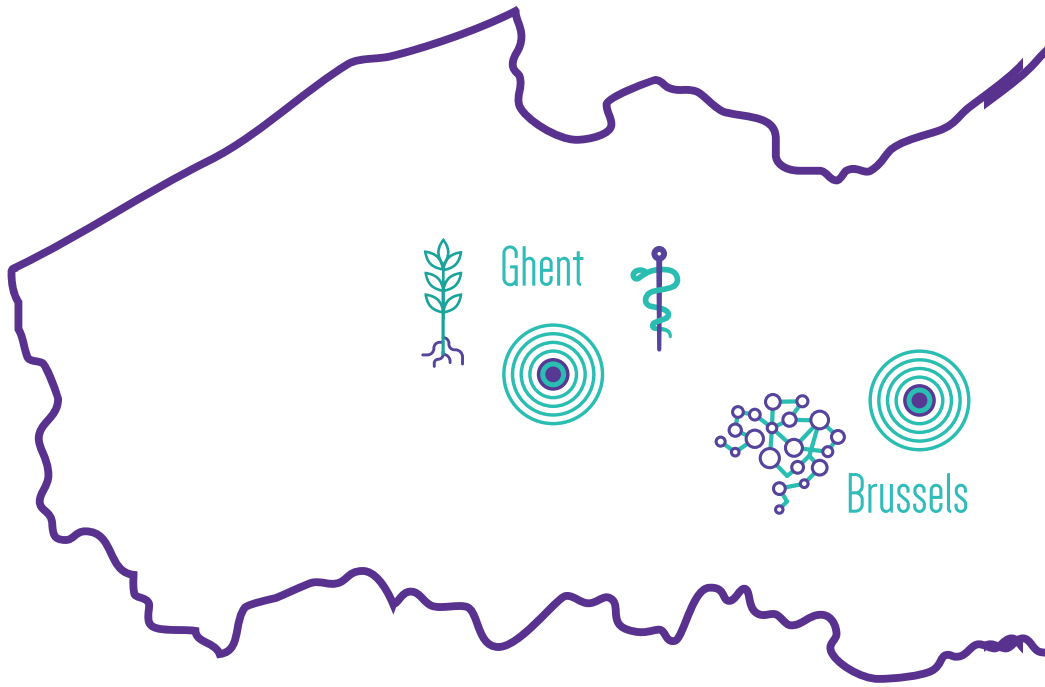




FUNDING YOUR POSTDOC

at VIB





Inflammation Research

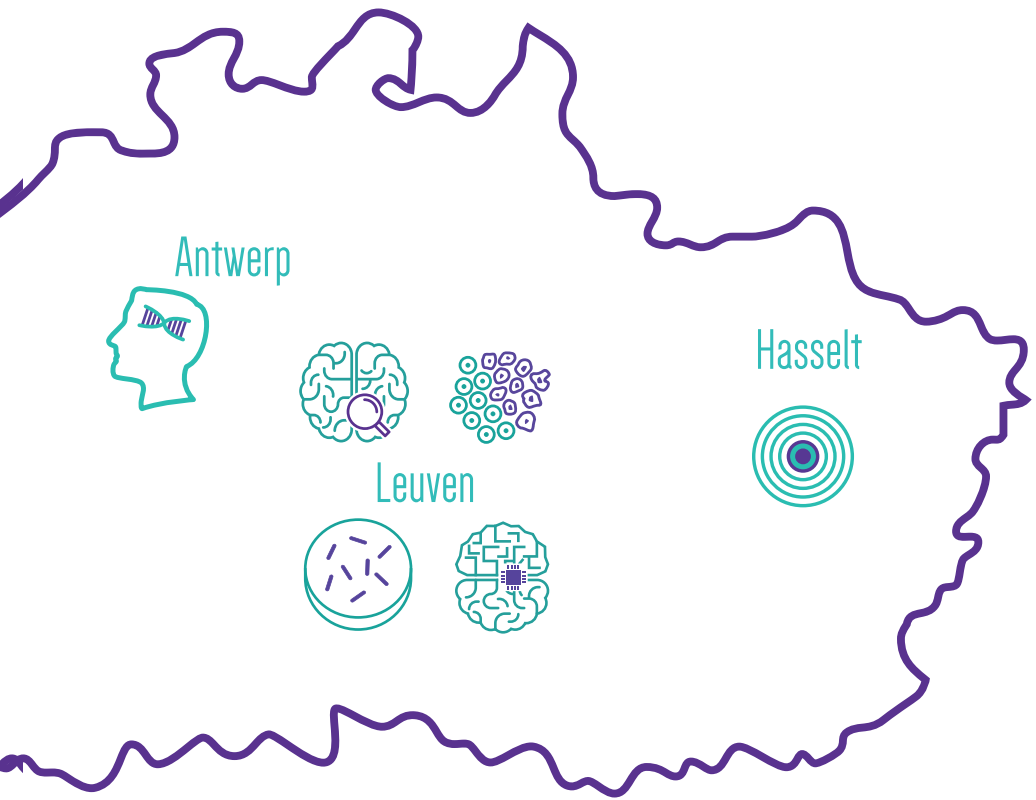


Plant Systems Biology



Medical Biotechnology





Molecular Neurology



Cancer Biology

Structural Biology



Microbiology

Brain & Disease Research



NERF

CONTENTS

WHY DO A POSTDOC?	6
IMPORTANCE OF YOUR OWN FUNDING?	7
WHAT IS VIB?	8
RESEARCH TOPICS AT VIB	9
TECHNOLOGY AND TRAINING AT VIB	13
VIB'S INTERNATIONAL GRANTS OFFICE & THE GRANTS TEAM.....	16
WHAT DO YOU FIND IN THIS BOOKLET?	17
ROADMAP FOR WRITING A GRANT APPLICATION	18
FUNDING OPPORTUNITIES	27

WHY DO A POSTDOC?

As competition for academic positions has grown fiercely over the past number of years, postdoctoral training has become a standard requirement for securing a tenure-track position in most scientific disciplines.

Postdoctoral training has also proved to be a strong asset when applying for positions in the biotech and pharma industries. Other employers that find postdoctoral training essential are mostly government agencies, non-profit research organizations, research-focused companies, healthcare centers and other organizations driven by scientific research.

One should always be aware that ‘a postdoc’ itself should never be a career goal. A postdoc is a training period enabling you to not only go deeper into a research subject, but also to acquire additional skills. You will increase your knowledge, training and experience, enhance your ability to conduct independent research, build and expand your network, learn how to collaborate and deal with aggressive deadlines.

In a way, one or more postdoc(s) will empower you in paving the way to your ultimate career goal.



IMPORTANCE OF YOUR OWN FUNDING?

Most of the postdocs at VIB find their own funding by applying for grants at national or international level or from existing granting systems at the university. Obtaining such a postdoc grant is not simple. The success rate is rather low, it takes a lot of time and effort and in most cases, it takes a long time before you know whether or not you have been successful.

The long strenuous process and the insecurity can be stressful, but, on the other hand, obtaining your own research grant is very rewarding; and more importantly it is a prerequisite on your CV for future academic positions. Obtaining a competitive grant in life sciences means that you have a relevant biological question, that you are able to write down your ideas in a structured and clear manner, that you can build a strong research plan, that you can cope with deadlines, and that you take into account the administrative side of things. The latter might seem unimportant, but when not done properly it can seriously hamper your success.

This is where the VIB grant office comes in. Our grants team will help you in making sure that you properly follow the whole application process and that the administrative part is 100% OK.

WHAT IS VIB?

VIB (or Flanders Institute for Biotechnology) is a non-profit institute that conducts groundbreaking biomolecular research in life sciences. Its overarching goal is to lead to sustained scientific progress and contribute to a better world.

Scientists at VIB study the molecular mechanisms that shape human health and disease, and plant growth and development. The research results can lead to improved detection, prevention and treatment of diseases, as well as enhanced crops and food products.

VIB was founded in 1995 as an interuniversity institute and has since then led the way in showing how excellent strategic basic research combines with a proactive technology transfer strategy to create tangible results that improve society.

<http://www.vib.be>

RESEARCH TOPICS AT VIB

Scientists at VIB conduct pioneering research across a wide spectrum of disciplines ranging from cancer, inflammation and neuroscience, to plant biology. One of the institute's strengths is the combined expertise of its scientists, who are world leaders in their field.

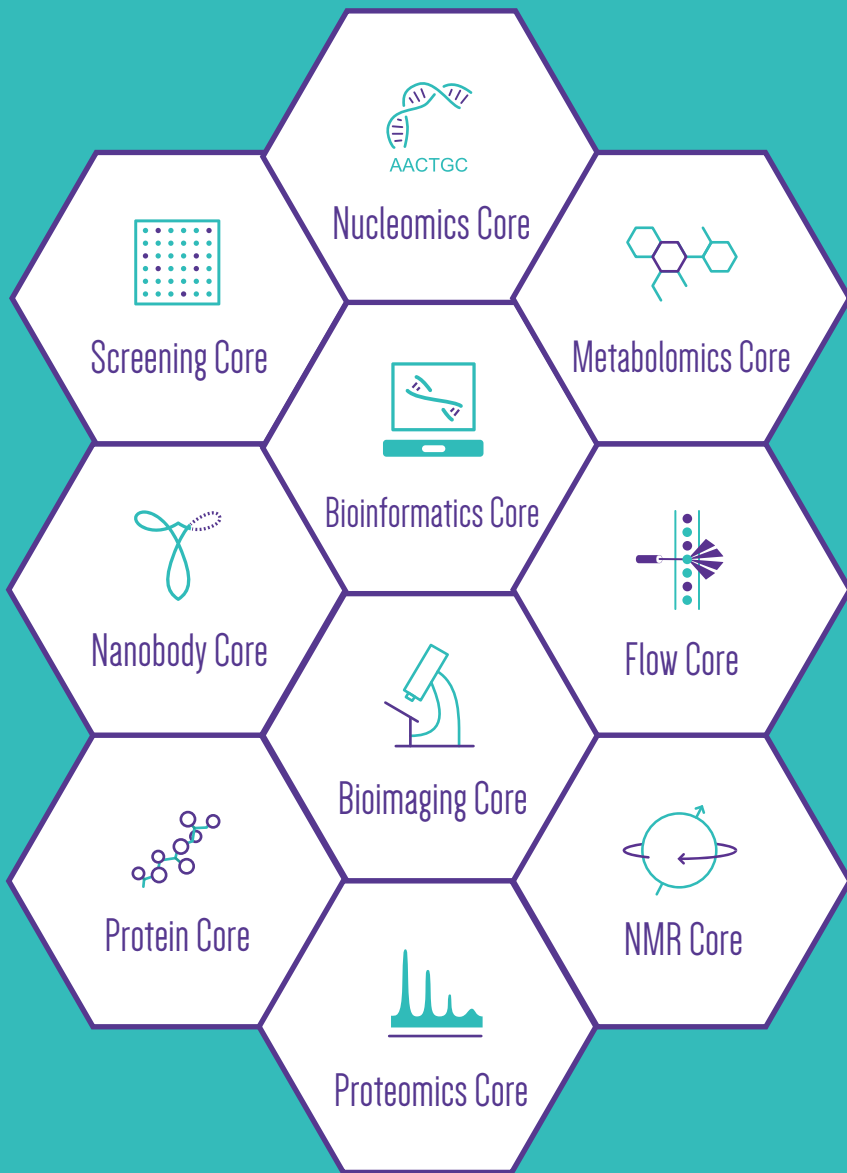
Life sciences are evolving at an ever-increasing pace: the boundaries of our knowledge are constantly shifting, and new technologies emerge daily. VIB scientists are at the forefront of all these developments and can rely on excellent support staff and state-of-the-art lab facilities and equipment.

Finding answers to the most crucial questions in tomorrow's life sciences requires a multidisciplinary approach, as well as different levels of magnification and aggregation. These range from organism to organ, from cellular to subcellular levels, and from molecules to atoms. Across all these levels, VIB scientists are clustered around research topics that represent some of the most pressing challenges in human health and plant biotechnology. Furthermore, VIB's research is conducted in eight thematic research centers embedded in one of the universities in Flanders (see map at the front of this booklet).





UGhent-VIB researchbuilding FSVM



TECHNOLOGY AND TRAINING AT VIB

Core facilities

To support the groundbreaking work by its scientists, VIB has 10 institutional Core Facilities in total, providing support in a wide array of research fields and housing specialized scientific equipment and services for each discipline.

The VIB Cores, supported by the 'Technology Watch' program, are instrumental in guaranteeing VIB scientists access to the latest and greatest tools and field-specific technologies. The different cores gather expertise in state-of-the-art servicing in, for example, transcriptomics, genomics and proteomics, protein and antibody engineering, advanced light & electron microscopy, and in assay design and proof-of-concept screens. This technoscientific expertise, which would be costly and almost impossible to replicate in individual research groups, is made available to the VIB life sciences research community and beyond.

<https://corefacilities.vib.be/>

Training

To advance the future career prospects of PhD students and postdoctoral researchers, VIB strives for a maximal development of talents. VIB offers a large range of training courses in the life sciences for doctoral and postdoctoral researchers under the umbrella of TRAINING at VIB. TRAINING at VIB creates the context for developing talents and skills tailored to the researcher's specific ambitions and competences. Next to keeping researchers up to date on emerging scientific technologies, we offer transferable skills courses, career guidance programs, leadership programs, etc.

To help researchers to develop their personalized training program, TRAINING at VIB has been divided in four main categories: Science, Skills, Bioinformatics & Coaching.

With our training program, TRAINING at VIB aims to create a maximum of opportunities for researchers to become a topnotch scientist and to optimally prepare them for a next step in their career, which can be on the external labor market or in an academic setting.

<https://training.vib.be/>

SCIENCE



metabolomics data interpretation,
basics of single cell analysis
and many more

BIOINFORMATICS



basic statistics in R, data carpentry
genomics and many more

SKILLS



tech transfer course,
grant writing and many more

COACHING



career guidance,
leadership skills and many more

VIB'S INTERNATIONAL GRANTS OFFICE & THE GRANTS TEAM

As researchers rely heavily on competitive grants for funding, VIB launched its international Grants Office in spring 2017. The office covers every stage of the grant application process, from training, eligibility advice, administrative issues to pre-application peer review. This guidance starts well before the actual application as the Grants Office also guides you through the different funding opportunities. To maximize the expertise, the Grants Office connects to people at the different research centers involved in all aspects of grant applications for their center to build an institution-wide grants team.

Once a funding opportunity is selected, this team guides you through the application process with personal advice, guidelines and templates for the application, and proofreading. We also provide you with the necessary signatures or institutional documents when needed.

Moreover, VIB organizes two courses that are dedicated to grant writing:

- ▶ How to write a winning grant proposal
- ▶ ERC applications for starters and consolidators: tips & tricks



Grants team: Lieve Ongena, Elien Vandermarliere, Katie Van Geyte, Ana Ferreira, Elsa Lauwers, Nele Vervaeet and Hilde Govaert (not on the picture: Leen Notebaert and Christine Tiré)

WHAT DO YOU FIND IN THIS BOOKLET?

This booklet may be your first encounter with the Grants Office, but we are convinced that it will give you a handy overview of most of the available postdoc funding opportunities existing today. It can become your personal guide during your time as a postdoc at VIB.

Most funding opportunities exist for junior postdocs. However, the guide clearly indicates whether you can also apply as a senior postdoc. You will also notice that 'mobility' is an important requirement for many of the postdoc opportunities and it might be strategically important to decide when to move to VIB based on these mobility deadlines.

A general calendar gives an overview of relevant application deadlines and for each grant we give a short description of the funding opportunity, followed by practical information such as the deadline, the duration and the eligibility criteria.

As such, with this booklet, we want to share our expertise and guide you through the process of funding your postdoctoral career.

On the pages you will find **different labels** to help you with your search.

COUNTRY SPECIFIC

TOPIC SPECIFIC

ALSO FOR SENIOR POSTDOCS

To start off, here are the five **most popular** postdoc grants at VIB.

- 1 **EMBO long-term** | deadline: February | page: 37
- 2 **MSCA** | deadline: September | page: 33
- 3 **FEBS long-term** | deadline: October | page: 35
- 4 **FWO postdoc** | deadline: December | page: 28
- 5 **VLAIO innovation mandate** | no deadline | page: 31

ROADMAP FOR WRITING A GRANT APPLICATION

Before you start writing your proposal, it is advised to set up a road map of your project. You need to carefully think about your research question and how you will solve it. Once you have a draft of your workplan (roadmap), go and discuss this with your PI.



ROAD MAP

aims are reflected in work packages



FINAL PROPOSAL

build a 'story' around your road map:
state of the art, objectives
and methodology (motivation
and risk assessment)



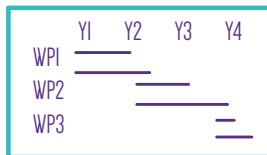


WHAT? WHY? HOW? WHY YOU? WHY NOW?

the answer to these 5 questions
is the outline of your abstract and
the basis of your proposal

01

03



GANTT CHART

allocate your WPs, tasks, deliverables
and milestones over the dedicated time

CONCEPT (3 months)



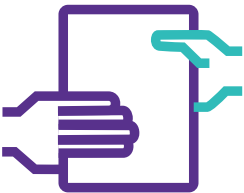
- Discuss the proposal with your PI
- Get the commitment of your PI
- Meet with the Grants Office to plan your application and get info about the call

DRAFT VERSION (2 months)



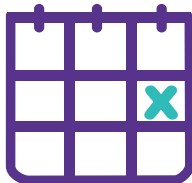
- Go over the application with the Grants Office (you can send us your first draft)
- Work on their suggestions

PREFINAL VERSION (2 weeks)



- Hand in your complete proposal to the Grants Office for a final review
- Work on their suggestions

DEADLINE



- Submit your grant proposal

MONTHLY OVERVIEW OF

FUNDING	JAN	FEB	MAR	APR	MAY
The Branco Weiss fellowship	■				
European Respiratory Society – long-term	■				
EFSD		■			
EMBO long-term		■			
FWO senior clinical investigator		■			
Alzheimer’s Association Clinician Scientist			■		
Alzheimer’s Association Research fellowship			■		
Damon Runyon Research Foundation			■		
Cancer Research Institute				■	
European Respiratory Society – short-term				■	
Fondation Fyssen				■	
Generet Award for Rare Diseases				■	
Stichting voor Alzheimer Onderzoek				■	
Kom op tegen kanker					■
Juvenile Diabetes Research Foundation					
Helen Hay Whitney Foundation					
Human Frontiers Science Program					
Banting Postdoctoral Fellowships					

THE GRANT DEADLINES

JUN	JUL	AUG	SEP	OCT	NOV	DEC	PAGE
							41
							58
							63
		■					37
							29
							53
		■					52
				■			57
					■		56
					■		60
							44
							64
							51
							55
■							62
	■						48
		■					34
			■				46

FUNDING	JAN	FEB	MAR	APR	MAY
Canon Foundation					
MSCA Fellowships					
BAEF					
FEBS long-term					
AXA research fund					
AFTD					
Schlumberger foundation					
Fulbright commission					
FWO Postdoctoral Fellowships					
Alexander von Humboldt					
DFG research fellowships					
EMBO short-term					
FEBS short-term					
FWF Der Wissenschaftsfonds					
FWO travel grants					
VIB Tech Watch funding					
VLAIO Innovation mandates					

JUN	JUL	AUG	SEP	OCT	NOV	DEC	PAGE
			■				50
			■				33
				■			49
				■			35
					■		39
					■		54
					■		40
						■	47
						■	28
							42
							43
							38
							36
							45
							30
							32
							31



The background is a blurred image of what appears to be a laboratory or office setting. A large, bright orange triangle is positioned in the upper right quadrant, and a teal triangle is in the lower left quadrant. The text is centered in the white space between these two triangles.

FUNDING OPPORTUNITIES

Postdoctoral Fellowships from the FWO support researchers who have completed their PhD and wish to perform postdoctoral research within a Flemish research institute or university.

DEADLINE

Beginning of December.

DURATION

3 years.

BUDGET

Salary and bench fee .

ELIGIBILITY CRITERIA

- **Junior postdoctoral Fellowship:**
PhD obtained less than three years before the 1st of October of the year in which your Fellowship starts
- **Senior postdoctoral Fellowship:**
PhD obtained between three and six years before the 1st of October of the year in which your Fellowship starts
- You can apply maximum two times for the same Fellowship
- You can apply for a senior Fellowship if you were previously awarded a junior Fellowship. However, the senior Fellowship has to immediately follow the junior Fellowship.

HOW TO APPLY?

Online application form containing administrative details, a motivation and a 10-page project description.

TIMING

After the preselection (mid-April), you can be invited for a second evaluation round which includes an interview (May or June). The results are announced at the end of June and one can start with the Fellowship on the 1st of October or the 1st of November. The success rate in 2017 was 28%.

<https://www.fwo.be/>

FWO

Senior clinical investigator



FWO senior clinical investigator Fellowships support doctors and researchers who have obtained their PhD and want to pursue a career in translational research. During their Fellowship, they are partially released from clinical duties so that they can focus on research. This Fellowship can be renewed twice.

DEADLINE

Beginning of February.

DURATION

5 years of part-time research.

BUDGET

Half of the salary provided by FWO, the other half by the hosting institute.

ELIGIBILITY CRITERIA

- PhD holder
- Medical specialist, general practitioner or pharmacist specialist in clinical biology with a fulltime clinical role at a university hospital affiliated to a Flemish university
- Employment contract of indefinite duration
- Spend at least 80% of your time on purely clinical activities
- Apply maximum two times for the same Fellowship

HOW TO APPLY?

Online application form containing administrative details, a motivation and a 10-pages project description.

TIMING

The results are announced in June and the Fellowship starts on the 1st of October.

<https://www.fwo.be/>



ALSO FOR SENIOR POSTDOCS

FWO

Travel grants for international mobility



The FWO encourages mobility among researchers and international contacts between research groups. It therefore offers several types of mobility grants:

- **Grant for participation in a conference abroad:** to support researchers who wish to actively (presentation or poster) participate in an international scientific conference abroad.
- **Travel grants for a short stay abroad (at most 1 month):** to support researchers who wish to spend a short period abroad to further specialize in their research field.
- **Grant for the participation in an international workshop or course:** to support researchers who wish to participate in a course or workshop abroad so that they can specialize in their area of interest.
- **Travel grant for a long stay abroad (between 1 and 12 months):** to support researchers who will be staying abroad for a longer period to perform advanced research or to specialize in specific research techniques.
- **Grant for a long stay at an ERC grantee abroad (3 up to 6 months):** targeted to future ERC candidates who wish to gain experience in the research environment of a former or current ERC grantee.

DEADLINE

No later than 3 months prior to the departure date.

BUDGET

Travel expenses from Brussels to the venue and the return plus a fixed allowance per day. This daily allowance is not provided for the participation in a conference abroad.

HOW TO APPLY?

Online platform of FWO.

TIMING

The results are announced via a personal letter shortly before you leave.

<https://www.fwo.be/>

ALSO FOR SENIOR POSTDOCS

The ultimate goal of these mandates is to bridge the gap between academia and industry, to help the researcher to make the transition into the business world. Mobility between academia and industry is therefore encouraged during the mandate.

Innovation mandates can result in:

- The establishment of a spin-off company
- Cooperation with an existing company

DEADLINE

Applications can be submitted throughout the year and each calendar year contains 1 or 2 evaluation periods. These evaluation periods vary between years and can be found on the website.

DURATION

2 years.

BUDGET

Salary and bench fee.

ELIGIBILITY CRITERIA

- PhD holder
- Any nationality
- All academic disciplines
- Guidance of an academic promotor and an industrial mentor

HOW TO APPLY?

You need to write your proposal together with your academic promotor and industrial mentor. A mutual cooperation agreement is needed.

TIMING

Once the project is declared eligible, the decision whether or not to support the project will be made within 75 working days. The mandate starts on the first day of the month and at maximum 6 months after the decision to support the project.

<https://www.vlaio.be/>

¹ VLAIO: Agentschap Innoveren & Ondernemen

VIB Tech Watch funding



VIB's Technology Watch team aims to identify disruptive technologies early in their development and subsequently offers VIB scientists privileged access and specific project funding to use these technologies in their research. As such, scientists at VIB can apply for three types of tech watch funding:

- **Early access funding:** for access to technologies that are in development by companies and hence not yet available on the market
- **New technology funding:** for access to technologies that have been commercialized in the last three years and that are not yet available within VIB
- **Technology development funding:** to enable proof of concept experiments that will allow applicants to obtain further funding for downstream expansion of the technology concept

DEADLINE

Applications are accepted continuously and are evaluated 4 times per year.

DURATION

Maximum 12 months

BUDGET

A fixed budget is allocated to several projects and each project is typically complemented with own funding.

ELIGIBILITY CRITERIA

- PhD holder
- The proposed project should be finished within one year

HOW TO APPLY?

Applications have to be sent to Halina Novak (halina.novak@vib.be).

A template can be downloaded from the VIB intranet.

REQUIRED DOCUMENTS:

- Half page of existing experience of the applicant
- Half page of background science
- 2-page project proposal

TIMING

About 4 weeks after the tech watch meeting, you will be informed on the outcome of your proposal.

<https://spoc.vib.be/>

ALSO FOR SENIOR POSTDOCS

MSCA Fellowships²



Marie Skłodowska-Curie Fellowships are prestigious postdoctoral grants funded by the European Commission. Mobility is key in these Fellowships. You have to move to another country: you can come from abroad to join VIB or go abroad after your research stay at VIB. Another important aspect is transfer of knowledge, both from the host lab to the researcher and from the researcher to the host lab.

European Fellowships:

- For a postdoctoral research stay in an EU member state or associated country
- 24 months
- Restart Fellowships – to restart your career after a career break of at least one year
- Reintegration Fellowships – to return to Europe after a research stay abroad

Global Fellowships:

- For a research stay outside Europe
- Followed by a mandatory one-year return period to Europe
- 36 months (24 months outside Europe – 12 months within Europe)

DEADLINE

Mid September.

DURATION

24 months (36 months for global Fellowship).

BUDGET

Living and mobility allowance, and if applicable a family allowance.

ELIGIBILITY CRITERIA

- PhD holder or at least four fulltime years of research experience
- Resided less than 12 months in the country of the host lab in the three years prior to the call deadline

HOW TO APPLY?

Submit a research proposal (10 pages) and CV (5 pages) to the Funding and Tender opportunities portal of the European Commission. In your research proposal, you need to address excellence, impact and implementation.

TIMING

The results are made available in February and the grant can start between the 1st of April and the 1st of September of the following year. The success rate upon application is about 13%.

<https://ec.europa.eu/>

ALSO FOR SENIOR POSTDOCS

Human Frontiers Science Program Fellowships



HFSP Fellowships encourage early career researchers to broaden their research skills by moving into new areas of study while working in a new country.

The Fellowships are for 3 years. The fellow can choose to stay up to 3 years in the host country, use the last year to return to the home country, or move to another country.

Long-term Fellowships

For PhD holders in a biological discipline, to broaden expertise by proposing a project in the life sciences which is significantly different from the previous work.

Cross-disciplinary Fellowships

For PhD holders outside life science, who had limited exposure to biology during their previous training.

DEADLINE

Initiation deadline beginning of August, submission deadline mid-August.

DURATION

3 years.

BUDGET

Living and (if applicable) family allowance.

ELIGIBILITY CRITERIA

- PhD holder by the start of the Fellowship
- PhD obtained less than 3 years prior to the submission deadline

- Have at least one lead author, full-length research paper
- You cannot have started working in the host lab before the 1st of April in the year in which you submit your proposal

HOW TO APPLY?

Online application.

TIMING

The Fellowship can start at the earliest on the 1st of April of the next year.

<http://www.hfsp.org/>

FEBS

Long-Term Fellowships



FEBS Fellowships allow members of a FEBS constituent society to work in a laboratory in an academic institution in a different FEBS country from that in which they are normally working; hence, mobility is required. FEBS long-term Fellowships are awarded to support long-term visits for the purpose of scientific collaboration or advanced training. The Fellowship should focus on biochemistry or molecular biology.

DEADLINE

1st of October.

DURATION

1 year but can be renewed up to a maximum of three years.

BUDGET

Travel and living allowance.

ELIGIBILITY CRITERIA

- PhD obtained less than 3 years ago
- Membership of a FEBS Constituent Society
- You currently work in a lab in a FEBS country and seek to work in a lab in a different FEBS country

HOW TO APPLY?

Online application.

TIMING

The decision will be communicated before the end of the year and the Fellowship should be taken up within six months of its award.

<https://www.febs.org/>



FEBS

Short-Term Fellowships



FEBS Fellowships allow members of a FEBS constituent society to work in a laboratory in an academic institution in a different FEBS country from that in which they are normally working; hence, mobility is required. FEBS short-term Fellowships are awarded to support short-term visits for the purpose of scientific collaboration, advanced training, or to employ techniques that are not available at the usual place of work. The Fellowship should focus on biochemistry or molecular biology.

DEADLINE

Applications can be made throughout the year and at least two months before the proposed starting date.

DURATION

2 to 3 months.

BUDGET

Daily fee to cover subsistence and travel costs.

ELIGIBILITY CRITERIA

- PhD obtained less than six years ago or at least one published paper as a main author in an international scientific journal
- Membership of a FEBS Constituent Society
- You currently work in a lab in a FEBS country and seek to work in a lab in a different FEBS country

HOW TO APPLY?

Online application.

TIMING

The Fellowship should be taken up within six months of its award.

<https://www.febs.org/>



EMBO long-term Fellowships are awarded to support post-doctoral research visits throughout Europe and the world. International exchange is therefore key in EMBO Fellowships.

DEADLINE

Applications can be sent throughout the year.

DURATION

2 years.

BUDGET

Living allowance.

ELIGIBILITY CRITERIA

- PhD obtained less than 2 years prior to the application date
- Movement between countries is required
- Applicants cannot have worked for longer than 6 months in the host lab prior to their application

HOW TO APPLY?

Online application accompanied by two references and a support letter from the host institute.

TIMING

Applications can be sent throughout the year. Each year, there are two evaluation periods: May and November. Applications received by the second Friday of February will be evaluated in the spring meeting followed by an interview in April. Applications received by the second Friday of August will be evaluated in the autumn meeting followed by an interview in October. Outcomes are announced in June and December.

<http://embo.org/>

EMBO Short-Term Fellowships



EMBO short-term Fellowships support short exchanges between laboratories. The aim of these visits is to facilitate collaborations between research groups and to apply techniques that are unavailable in the applicant's laboratory.

DEADLINE

Applications can be sent throughout the year. It is advised to apply 3 months before the proposed start date.

DURATION

Up to 3 months.

BUDGET

Travel and living allowance.

ELIGIBILITY CRITERIA

- At least one year of research experience at PhD-level
- Research exchange between laboratories in different member states

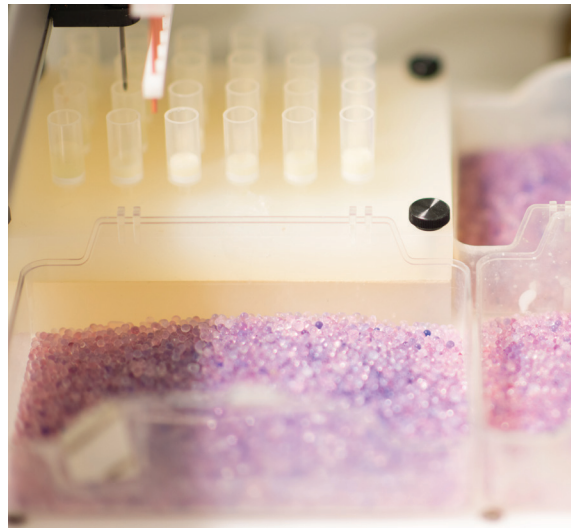
HOW TO APPLY?

Online application.

TIMING

Three to four months after the application, applicants are informed on the decision.

<http://embo.org/>



AXA research fund

AXA Fellowships



AXA Fellowships are a funding scheme that is aimed at supporting young promising researchers on a priority topic. These topics change yearly and are announced on the AXA website. The proposed research topic should be of scientific originality and innovative in nature.

DEADLINE

End of November.

DURATION

2 years .

BUDGET

Fixed amount.

ELIGIBILITY CRITERIA

- PhD obtained less than 5 years prior to the application deadline
- Proven scientific excellence and high potential for innovation, transformation and dissemination

HOW TO APPLY?

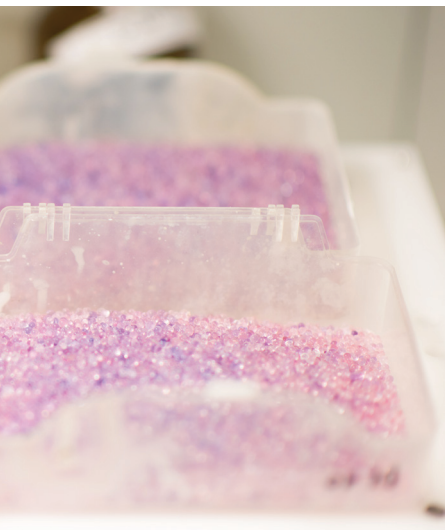
The application is a 3-step process.

- Expression of interest – the host institute needs to submit a short description of the project and the applicant (November)
- Full application – the full application needs to be submitted through the European Science Foundation online platform (December)
- Rebuttal – the candidate is given the opportunity to respond to the comments of the experts (February)

TIMING

The final results are announced in April and the project can subsequently start between April and January.

<https://www.axa-research.org/>



ALSO FOR SENIOR POSTDOCS

Schlumberger foundation

Faculty for the future



This program awards Fellowships to women from developing and emerging economies to pursue a PhD or postdoctoral study in science, technology, engineering and mathematics at leading universities worldwide.

DEADLINE

Beginning of November.

DURATION

One year, renewable.

BUDGET

Fixed amount.

ELIGIBILITY CRITERIA

- Candidates should already be admitted to or enrolled in a university abroad when submitting their grant application
- Proven commitment to return to the home country to contribute to the advancement of the region

HOW TO APPLY?

Online application.

TIMING

The results are usually announced in April.

<https://www.slb.com/>



ALSO FOR SENIOR POSTDOCS

The Branco Weiss Fellowship

The
Branco Weiss
Fellowship
Society in Science

This postdoctoral Fellowship awards researchers around the world and gives them the freedom to work on whatever topic they choose anywhere in the world. Ideally, the fellow pursues an unconventional project in new areas of science. The program is based at the Swiss Federal Institute of Technology in Zurich (ETH).

The Fellowship is awarded in 2 installments:

- **Pioneer phase:** first 2 years of research followed by a review
- **Exploitation phase:** the remaining three years

DEADLINE

Mid January.

DURATION

5 years.

BUDGET

Fixed amount.

ELIGIBILITY CRITERIA

- PhD holder on the date of submission
- No older than 35 in the year of submission
- The project should depart from the mainstream of research in your discipline
- You must be willing to engage in a dialogue on issues across the frontiers of your discipline

HOW TO APPLY?

Online application.

Several documents are needed:

- Letter of motivation
- Proposed research project (timelines and budgets are not needed)
- Curriculum
- Copies of your three best publications
- Application overview (template available on the website)

TIMING

Candidates on the short-list are invited for a personal interview in Zurich, Switzerland. This interview round takes place in June and the fellow can start the research project between the beginning of September and the end of December.

<https://brancoweissfellowship.org/>

Alexander von Humboldt Feodor Lynen Research Fellowship



Alexander von Humboldt
Stiftung/Foundation

These Fellowships sponsor researchers from Germany. In the last few years, the success rate was approximately 40%.

- **Post-doctoral researchers:** PhD obtained less than 4 years prior to application
- **Experienced researchers:** PhD obtained less than 12 years prior to application

DEADLINE

Proposals can be submitted at any time. The selection committee meets in February, June and October.

DURATION

6 to 24 months.

BUDGET

Salary, with the expectation that the host institution contributes about one third of the Fellowship amount.

ELIGIBILITY CRITERIA

- German citizen
- Confirmation from the host institution
- Academic host must be a member of the Humboldt network

HOW TO APPLY?

Online application.

TIMING

The selection committee meets in February, June and October. You need to apply at least four to seven months ahead of the prospective selection date. Successful candidates can start their Fellowship between 2 and 12 months after the meeting of the selection committee.

<https://www.humboldt-foundation.de/>

LINK WITH GERMANY

ALSO FOR SENIOR POSTDOCS

Deutsche Forschungsgemeinschaft Research Fellowships

DFG Deutsche
Forschungsgemeinschaft

DFG Fellowships are intended to help young scientists to conduct a defined project at a location of their choice in a country other than Germany.

DEADLINE

Proposals can be submitted at any time.

DURATION

Up to 2 years.

BUDGET

Living allowance and (if applicable) family allowance

ELIGIBILITY CRITERIA

- PhD holder
- German nationality or resident in Germany for several years

HOW TO APPLY?

Online application. The template for the project description can be found on their website.

<http://www.dfg.de/>



LINK WITH GERMANY

ALSO FOR SENIOR POSTDOCS

Fondation Fyssen Postdoctoral Awards



These awards aim at French researchers who wish to pursue a project in a foreign laboratory, or foreign researcher who wish to pursue a project in a French laboratory.

DEADLINE

Beginning of April.

DURATION

1 year.

BUDGET

Fixed amount.

ELIGIBILITY CRITERIA

- Less than 35-year-old at the closing day of the call
- PhD obtained less than 2 years ago on September 1st of the year of your application

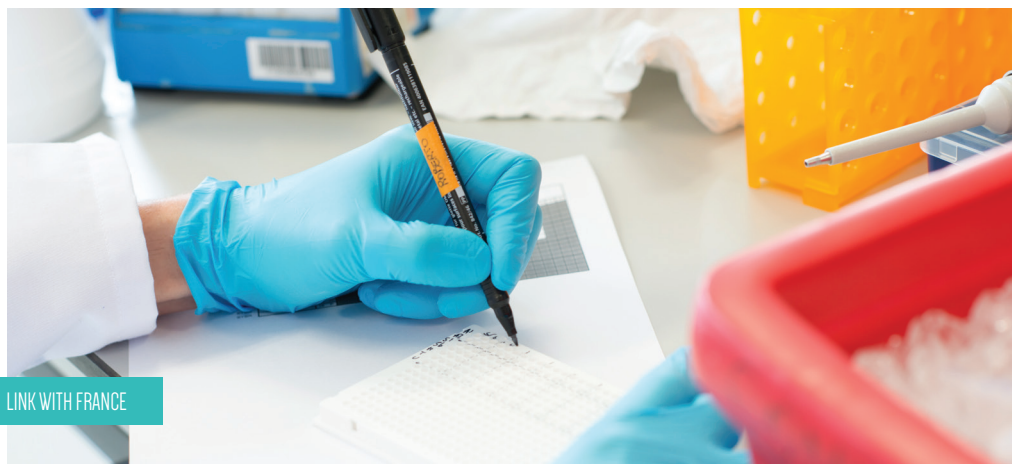
HOW TO APPLY?

Online application form. A hard copy of this form needs to be sent to the foundation by post.

TIMING

Results are announced around mid-July. You need to start your Fellowship between the 1st of September of the application year and January of the following year.

<http://www.fondationfyssen.fr/>



LINK WITH FRANCE

FWF Der Wissenschaftsfonds Erwin Schrödinger Fellowships

FWF

Der Wissenschaftsfonds.

This funding is for highly qualified researchers who wish to contribute to the scientific development of an Austrian research institute. The fellow gains experience abroad (new scientific area, methods, procedures or techniques) and then returns to Austria to further develop science in Austria.

DEADLINE

Applications can be made throughout the year. It takes about 4 months to process an application.

HOW TO APPLY?

Electronic submission.

<https://www.fwf.ac.at/>

DURATION

Up to 24 months.

BUDGET

Fixed amount and bench fee.

ELIGIBILITY CRITERIA

- PhD holder
- International scientific publications
- Invitation from an Austrian research institution
- Invitation from the foreign research institution

LINK WITH AUSTRIA

ALSO FOR SENIOR POSTDOCS

Banting Postdoctoral Fellowships



Banting postdoctoral Fellowships support the very best postdoctoral applicants who will positively contribute to the country's economic, social and research-based growth. The program aims to (1) attract and retain top postdoctoral talent, (2) develop their leadership potential, and (3) position them for success as research leaders of tomorrow.

- Canadian citizens can go abroad with a Banting Postdoctoral Fellowship
- Non-Canadian citizens can come to Canada with a Banting Postdoctoral Fellowship

DEADLINE

Mid-September.

DURATION

2 years.

BUDGET

Fixed amount.

ELIGIBILITY CRITERIA

- If you are not a Canadian citizen, your Fellowship should be at a Canadian institution
- If you are a Canadian citizen, you can do your Fellowship at an institute outside of Canada
- PhD obtained less than 3 years prior to application

HOW TO APPLY?

The application has to be completed in full collaboration with the proposed host institute. Applications start with the registration for Canadian Common CV and ResearchNet accounts.

TIMING

The results are communicated mid-February and the Fellowship can start between April and October.

<http://banting.fellowships-bourses.gc.ca/>

LINK WITH CANADA

Fulbright commission

Academic exchanges between the US, BE & LUX



These Fellowships support clear, creative and feasible projects of researchers who are subsequently willing to return to their country of citizenship to share their new-found knowledge.

- **Grants for Belgian and Luxembourgish citizens** to perform research at an institute in the US
- **Grants for European citizens** to perform research at an institute in the US
- **Grants for American citizens** to perform research at an institute in Flanders or Luxembourg

DEADLINE

Beginning of December.

DURATION

3 to 12 months.

BUDGET

Fixed monthly amount.

ELIGIBILITY CRITERIA

PhD holder or at least 5 years of research experience.

HOW TO APPLY?

Online application system.

<http://www.fulbright.be/awards/>

LINK WITH US, BE & LUX

ALSO FOR SENIOR POSTDOCS

Helen Hay Whitney Foundation Research Fellowship



The aim of the HHWF is to increase the number of imaginative, well-trained and dedicated medical scientists. The foundation encourages independent thinking, creativity, and passion for science and discovery engaged in biological or medical research.

- **For US citizens** who plan to work in labs at the US, Canada or abroad
- **For non-US citizens** to work in labs in the US

DEADLINE

Beginning of July.

DURATION

3 years.

BUDGET

Fixed amount.

ELIGIBILITY CRITERIA

- PhD obtained less than one year prior to the application deadline
- You can apply in the last year of your PhD

HOW TO APPLY?

Online application.

TIMING

After evaluation of the proposals, successful applicants pass to the second evaluation round and are invited for an interview in October. The Fellowship can start between April and September.

<http://hhwf.org/>

LINK WITH CANADA



BAEF³

Fellowships for research in Belgium



The BAEF encourages young researchers to apply for a Fellowship for a research stay at a Belgian university or institution.

DEADLINE

End of October.

DURATION

6 months to one year.

BUDGET

Fixed amount.

ELIGIBILITY CRITERIA

- PhD obtained less than 2 years prior to the application deadline
- You must be a citizen or permanent resident of the US

HOW TO APPLY?

A full application form needs to be submitted via email.

TIMING

The Fellowship can start between July and December.

<http://www.baef.be/>



LINK WITH US & BE

³ BAEF: Belgian American Educational Foundation

Canon Foundation Research Fellowships



Each year, the Canon Foundation grants up to 15 Fellowships to highly qualified European and Japanese researchers. European fellows are expected to pursue a period of research in Japan while Japanese fellows are expected to do their research in Europe. Priority is given to applicants who would go to Europe and Japan for the first time.

DEADLINE

Mid-September.

DURATION

3 to 12 months.

BUDGET

Fixed amount.

ELIGIBILITY CRITERIA

Applicants should have obtained at least a master's degree within the last 10 years of applying to the Canon Foundation

HOW TO APPLY?

Online application. Priority is given to those researchers who plan to go to the host lab rather than to researchers who wish to prolong their research stay.

TIMING

The results are announced at the end of December. The Fellowship can subsequently start in January of the following year.

<https://www.canonfoundation.org/>

LINK WITH JAPAN

Stichting voor Alzheimer Onderzoek Pilot Grant



These grants are awarded to young scientists who work in the areas of basic and clinical research of Alzheimer disease and related disorders.

DEADLINE

Mid-April.

DURATION

2 years.

BUDGET

Fixed amount to cover salary.

ELIGIBILITY CRITERIA

- PhD obtained less than three years prior to the start of the award period
- Associated with an experienced research team working on Alzheimer disease and related disorders

HOW TO APPLY?

Online application. Required documents:

- Bio sketch of your PI
- The “awards terms and conditions” document with the signature of your PI
- A budget table
- Research proposal (about 10 pages long).

TIMING

The grant starts at the 1st of January of the year that follows its selection.

<https://www.stopalzheimer.be/>



Alzheimer's Association Research Fellowship

Alzheimer's Association Research Fellowships support exceptional researchers in their postdoctoral work in diverse areas of research on Alzheimer and related forms of dementia.

- **Alzheimer's Association Research Fellowship (AARF):** For postdoctoral scientists working in Alzheimer's or related forms of dementia
- **Alzheimer's Association Research Fellowship to Promote Diversity (AARF_D):** For postdoctoral scientists from underrepresented groups working in Alzheimer's or forms of dementia

DEADLINE

Beginning of March.

DURATION

24 to 36 months.

BUDGET

Fixed amount.

ELIGIBILITY CRITERIA

- PhD obtained less than 10 years prior to application
- Only for postdoctoral scientists

HOW TO APPLY?

A 2 to 3 pages statement from the mentor is needed. This statement should include information on the research qualifications and experience as a research supervisor and the commitment to the applicant.

Other documents needed are:

- Statement of commitment
- Area of research
- Available resources and budget justification
- Bio sketch
- Letter of reference
- Document W9/W8

In a first step, a letter of intent must be sent (beginning of October), followed by the application itself (mid-November).

TIMING

Funding will be awarded by mid-February.

<https://www.alz.org/>

Alzheimer's Association Clinician Scientist Fellowship

alzheimer's  association®

Alzheimer's Association Clinician Scientist Fellowships support the training of clinician-scientists in Alzheimer's and related dementias. A clinician scientist is defined as an individual already trained, licensed and practicing in a clinical field.

Translational research specifically designed to develop treatments or enhance diagnosis of neurological diseases such as epidemiologic or behavioral studies, clinical trials, studies of disease mechanisms & the development of technologies is allowed.

- **Alzheimer's Association Clinician Scientist Fellowship (AACSF):** For clinicians who want to perform translational research in Alzheimer's or related dementias research
- **Alzheimer's Association Clinician Scientist Fellowship to Promote Diversity (AACSF_D):** For clinicians from underrepresented groups who want to perform translational research in Alzheimer's or related dementias research

DEADLINE

Beginning of October.

DURATION

24 to 36 months.

BUDGET

Fixed amount.

ELIGIBILITY CRITERIA

- Clinician who has completed a residency for an MD or DO or a postdoctoral fellow in a clinical practice field
- Degree obtained less than five years prior to the application
- Positions higher than Assistant Professor will not be considered

HOW TO APPLY?

A 2 to 3 pages statement from the mentor is needed. Other documents needed are:

- Statement of commitment
- Area of research
- Available resources and budget justification
- Bio sketch
- Letter of reference
- Document W9/W8

In a first step, a letter of intent must be sent (beginning of October), followed by the application itself (mid-November).

TIMING

Mid-February.

<https://www.alz.org/>

AFTD⁴

Postdoctoral Fellowships



AFTD postdoctoral Fellowships address disorders across the full spectrum of FTD disorders: behavioral variant FTD, primary progressive aphasia, progressive supranuclear palsy, corticobasal degeneration and FTD-ALS. Approaches that employ novel technologies or methodologies for data analysis are especially encouraged.

- **A basic science postdoctoral Fellowship** supports projects that seek to answer the questions about the biology or pathophysiology of FTD.
- **A clinical research postdoctoral Fellowship** supports projects that seek to answer questions relevant to FTD clinical practice.

DEADLINE

November.

DURATION

2 years.

BUDGET

Fixed amount.

ELIGIBILITY CRITERIA

- Applicants must hold a PhD, MD or MD-PhD degree
- Degree obtained less than three years prior to application

HOW TO APPLY?

Applicants must first submit a letter of intent (November). After an eligibility and relevance check of the project, the applicant will be invited to submit a full application (January).

TIMING

The outcome is announced in April and the project can then start on the 1st of July.

<https://www.theaftd.org/>

Kom op tegen kanker

Emmanuel van der Schueren postdoctoral Fellowship



These Fellowships support young researchers who perform fundamental or clinical cancer research to gain deeper understanding in the origin and growth of cancer cells.

DEADLINE

Beginning of May.

DURATION

3 to 5 years.

BUDGET

Salary.

ELIGIBILITY CRITERIA

Research needs to be performed at a Flemish institute.

HOW TO APPLY?

Online application.

<https://www.komoptegenkanker.be/>



ALSO FOR SENIOR POSTDOCS

Cancer Research Institute Postdoctoral Fellowship Program



These Fellowships provide support to fund and train young immunologists and cancer immunologists at top universities and research centers around the world. Both the applicant and the host institute seek hypothesis-driven, mechanistic studies in both immunology and tumor immunology. Moreover, they have to demonstrate the potential of the proposed study to directly impact our understanding of the immune system's role in cancer.

DEADLINE

Beginning of April and beginning of October.

DURATION

3 years.

BUDGET

Fixed amount to cover the salary, insurance, and other research-related expenses.

ELIGIBILITY CRITERIA

- PhD obtained less than 5 years prior to application
- Work in an area directly related to immunology or cancer immunology
- The Fellowship must take place in a non-profit institution

HOW TO APPLY?

A PDF application form has to be submitted electronically. Prior to the electronic submission, you will be asked six questions that will help to determine whether you are eligible to apply for a CRI Fellowship. If you meet the required criteria, you will be directed to the online application, else, you are asked not to apply.

TIMING

Applicants are notified of the outcome about 10 to 12 weeks after the application deadline. The Fellowship can subsequently be activated 3 months after the application deadline but no later than one year following the deadline.

<https://www.cancerresearch.org/>

Damon Runyon Cancer Research Foundation Fellowship

DAMON RUNYON
CANCER RESEARCH
FOUNDATION

This funding allows the brightest postdoctoral researchers to be mentored by established investigators in leading research laboratories. The proposed project has to be relevant to the study of cancer and the search for cancer causes, mechanisms, therapies and prevention. Fellows who are in their first and third year of the Fellowship must attend the Damon Runyon Fellows' retreats which are fostered for collaboration and interaction between scientists who work in different fields relevant to cancer.

- **Damon Runyon Fellowship award:** for postdoctoral researchers
- **Damon Runyon-Sohn pediatric cancer Fellowship award:** for research on pediatric cancers
- **Damon Runyon Dale F. Frey Award for breakthrough scientists:** for those fellows who have greatly exceeded the foundation's highest expectations

DEADLINE

Mid-March and mid-August.

DURATION

4 years.

BUDGET

Fixed amount.

ELIGIBILITY CRITERIA

- PhD obtained less than 18 months prior to the application deadline
- You cannot have worked in your host lab for more than one year prior to the application deadline
- Candidates who apply to work in foreign-based or US government laboratories may be awarded a Fellowship if the program represents an unusual opportunity for postdoctoral training.

HOW TO APPLY?

Online application. Application must be made under the guidance of a supervisor who can mentor the fellow.

TIMING

For applications submitted by mid-March, the award is confirmed in May and one can start the grant between July and October. For applications submitted by mid-August, the award is confirmed in November and one can start the grant between January and April.

<https://www.damonrunyon.org/>

European Respiratory Society Long-Term Research Fellowships



The ERS is committed to promote excellence in research and provides development opportunities for bright and committed researchers in respiratory medicine. The long-term research Fellowships are established to enable young scientists in the early stages of their research career in respiratory medicine to carry out basic, translational or clinical research projects. Through this experience, young scientists learn and apply advanced research procedures and techniques not available at their home institute. The applicants are selected based on their scientific merit and the skills and experience they can bring to a new center.

There are different types of ERS Long-Term Research Fellowships:

- **ERS/EMBO joint Fellowship:** from Europe/overseas to Europe/overseas
- **ERS long-term research Fellowship for scientifically developing countries:** for low income country applicants to Europe
- **ERS/SEPAR joint long-term Fellowship:** from Spain to Europe and vice versa
- **ERS standard long-term Fellowship:** from Europe/overseas to Europe
- **ERS/SPLF joint long-term Fellowship:** from France to Europe and vice versa
- **ERS child lung health long-term Fellowship:** from and to Europe
- **ERS international long-term Fellowship:** from Europe to overseas
- **ERS/ALAT joint long-term Fellowship:** from Latin America to Europa and vice versa
- **ERS/DZL joint long-term Fellowship:** from Europe/overseas to Germany

DEADLINE

Mid-January.

DURATION

Between 6 and 12 months.

BUDGET

Living allowance, child allowance (if applicable) and a travel grant.

ELIGIBILITY CRITERIA

- Actively engaged in the respiratory field
- MD, MSc, PhD, MD-PhD
- There is no age-limit, but priority is given to applicants in the early-stage of their research career
- ERS membership is required

HOW TO APPLY?

Online application.

TIMING

The outcome of these Fellowships is announced mid-May and the Fellowship can start from August onwards.

<https://www.ersnet.org/>



ALSO FOR SENIOR POSTDOCS

European Respiratory Society Short-Term Fellowships



The ERS is committed to promote excellence in research and provides development opportunities for bright and committed researchers in respiratory medicine. The short-term research Fellowships are established to enable young scientists in the early stages of their research career in respiratory medicine to visit a host institution in a country other than the candidate's own, with the aim to learn a research technique that is not available in the home institute. The home institute should benefit from the research training when the applicant returns there, by leading to research development and activities back onsite.

There are different types of ERS Short-Term Fellowships:

- **ERS International short-term Fellowship**
- **ERS/EMBO joint Fellowship**
- **ERS Standard short-term Fellowship**
- **ERS Fellowship in memory of Dr Valia Kechagia**
- **Walther Guerrero Ciquero TB Fellowship**
- **ERS/ICS join Fellowship**
- **ERS/TTS joint Fellowship**
- **ERS Short-term Fellowship for scientifically developing countries**

DEADLINE

Beginning of April and beginning of October.

DURATION

Between 1 and 3 months.

BUDGET

Living allowance, child allowance (if applicable) and a travel grant.

ELIGIBILITY CRITERIA

- Actively engaged in the respiratory field
- MD, MSc, PhD, MD-PhD
- There is no age-limit, but priority is given to applicants in the early-stage of their research career
- ERS membership is required

HOW TO APPLY?

Online application.

TIMING

Applications submitted by April are granted mid-July and can start from August onwards. Applications submitted by October are granted mid-February and can start from March onwards.

<https://www.ersnet.org/>

Juvenile Diabetes Research Foundation postdoctoral Fellowships



These Fellowships are intended to attract promising scientists. The applicant is required to work with a promotor who can provide a training environment conducive to start a career in type 1 diabetes-relevant research.

DEADLINE

End of June.

DURATION

3 years.

BUDGET

Salary.

ELIGIBILITY CRITERIA

PhD obtained less than 5 years prior to submission of the application.

HOW TO APPLY?

Online application.

TIMING

The results of this Fellowship are announced by the end of January and the Fellowship can start at the earliest on the 1st of March.

<http://grantcenter.jdrf.org/>



EFSD⁵

Lilly Young Investigator award program



The EFSD supports ground-breaking diabetes research and promotes the next generation of leading diabetes researchers.

DEADLINE

Mid February.

DURATION

12 months.

BUDGET

Fixed amount.

ELIGIBILITY CRITERIA

- PhD obtained less than 5 years before the 1st of January in the year of application
- Applicants to an EFSD program must be paid-up members of EASD
- The research award must be held at a non-profit institution based in Europe or an associated country

HOW TO APPLY?

Online application via the MyEASD platform.

TIMING

The outcome is expected in May.

<http://europeandiabetesfoundation.org/>

⁵ EFSD: European Foundation for the Study of Diabetes

Generet Award for Rare Diseases

The Generet award supports research on rare diseases to better understand the processes that underpin rare diseases and translate fundamental discoveries into better prevention, diagnosis or treatment for patients. The award supports a top researcher in Belgium who has already developed or is willing to develop a research line in rare diseases.

Rare diseases are considered to be life threatening or chronic conditions that affect no more than 1 person out of 2000. Rare cancers and rare adverse drug events are not taken into account.

DEADLINE

Mid-April.

DURATION

2 years.

BUDGET

Fixed amount.

ELIGIBILITY CRITERIA

- Applicant must be an established researcher
- PhD holder or at least 4 years of equivalent research experience
- Affiliated to a Belgian university, Belgian university hospital or Belgian research institute

HOW TO APPLY?

Online application.

TIMING

The outcome of the award is announced in October and the award starts in January.

<http://www.generetaward.be/>

WHO TO CONTACT

AT HEADQUARTERS

Lieve Ongena – lieve.ongena@vib.be
Elien Vandermarliere – elien.vandermarliere@vib.be
grantsoffice@vib.be

PSB

Christine Tiré – Christine.Tire@ugent.vib.be

CMB

Nele Vervaet - nele.vervaet@ugent.vib.be

NERF

Ana Ferreira - ana.ferreira@nerf.be

CBD

Elsa Lauwers - elsa.lauwers@kuleuven.vib.be
Hilde Govaert - hilde.govaert@kuleuven.vib.be

CCB

Leen Notebaert - leen.notebaert@kuleuven.vib.be
Katie Van Geyte - katie.vangeyte@kuleuven.vib.be

Basic research in life sciences is VIB's raison d'être. VIB is an independent research institute where some 1,500 top scientists from Belgium and abroad conduct pioneering basic research. As such, they are pushing the boundaries of what we know about molecular mechanisms and how they rule living organisms such as human beings, animals, plants and microorganisms.

Based on a close partnership with five Flemish universities – Ghent University, KU Leuven, University of Antwerp, Vrije Universiteit Brussel and Hasselt University – and supported by a solid funding program, VIB unites the expertise of all its collaborators and research groups in a single institute.

VIB's technology transfer activities translate research results into concrete benefits for society, such as new diagnostics and therapies and agricultural innovations. These applications are often developed by young start-ups from VIB or through collaborations with other companies. This also leads to additional employment and bridges the gap between scientific research and entrepreneurship.

VIB also engages actively in the public debate on biotechnology by developing and disseminating a wide range of science-based information. More information can be found at www.vib.be

VIB

Rijvischestraat 120

9052 Ghent

Belgium

Tel. +32 9 244 66 11

Fax +32 9 244 66 10

info@vib.be

www.vib.be